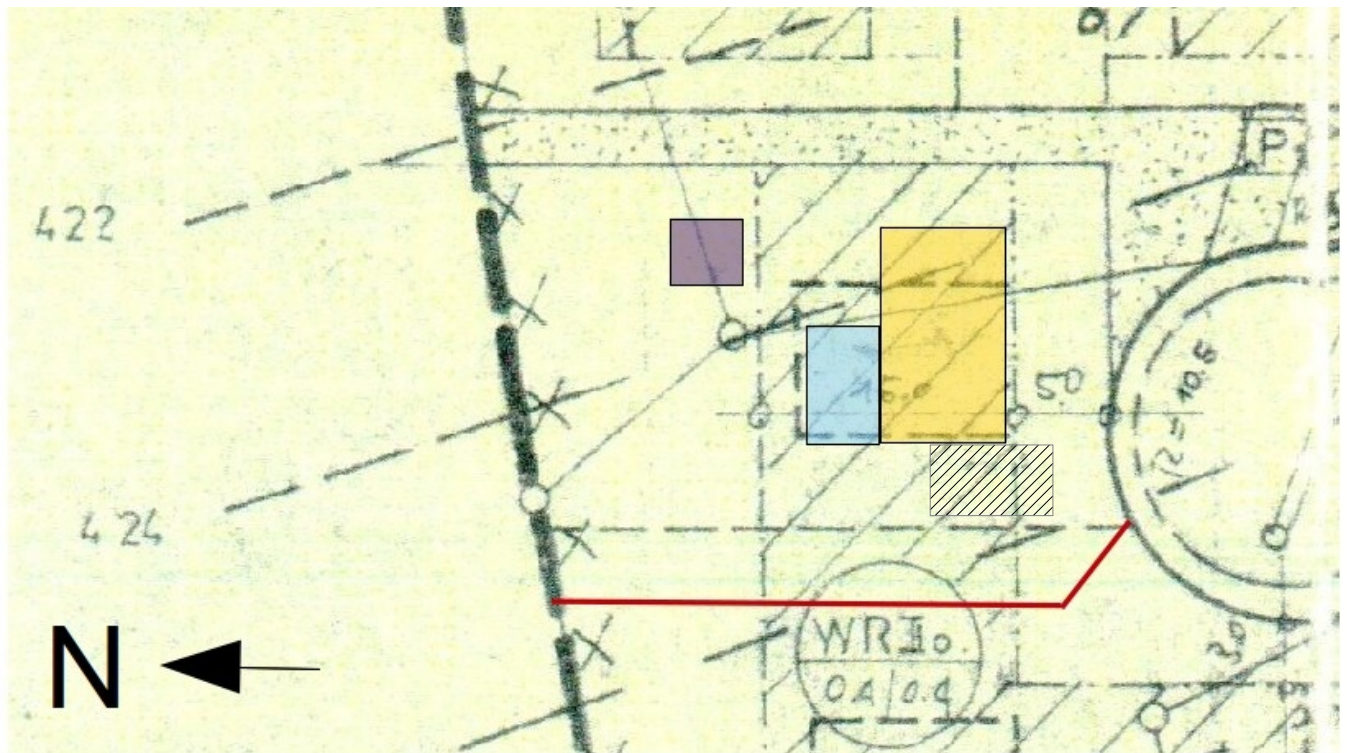





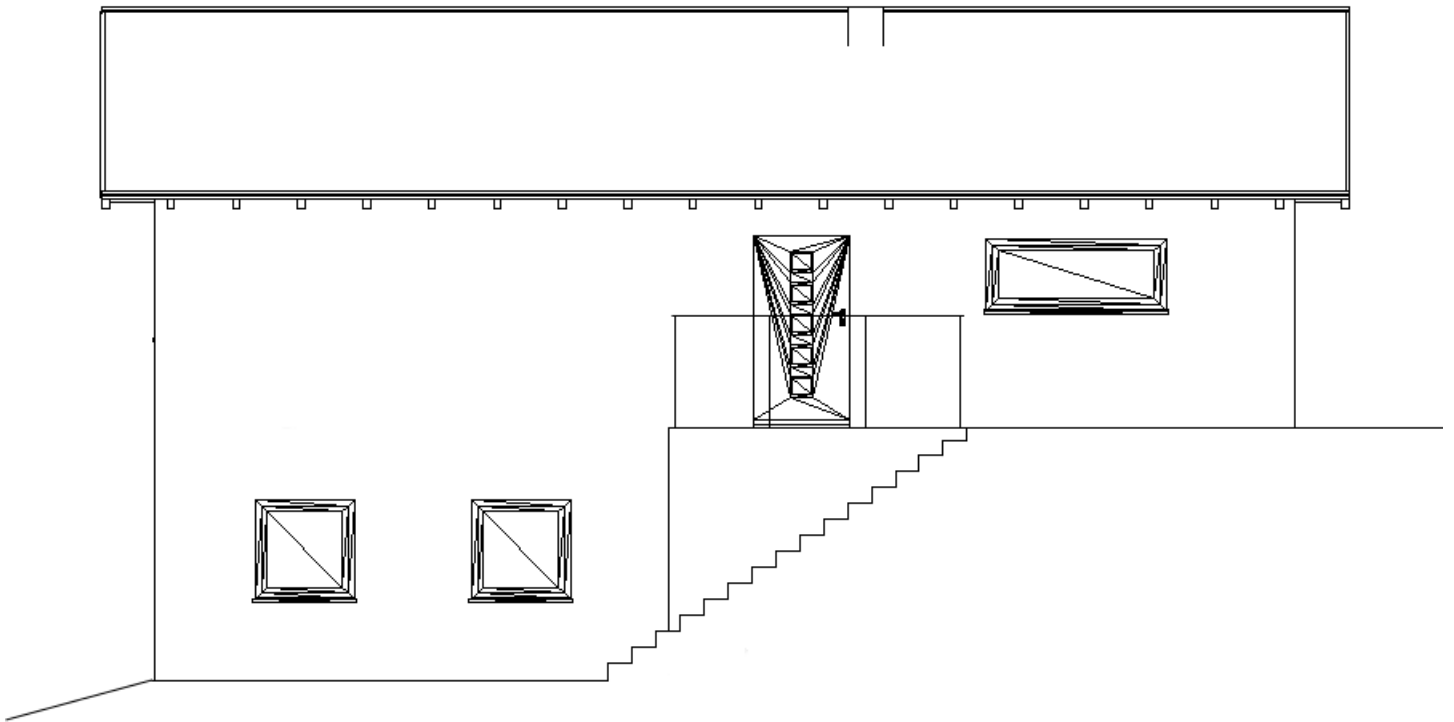


Lageplan

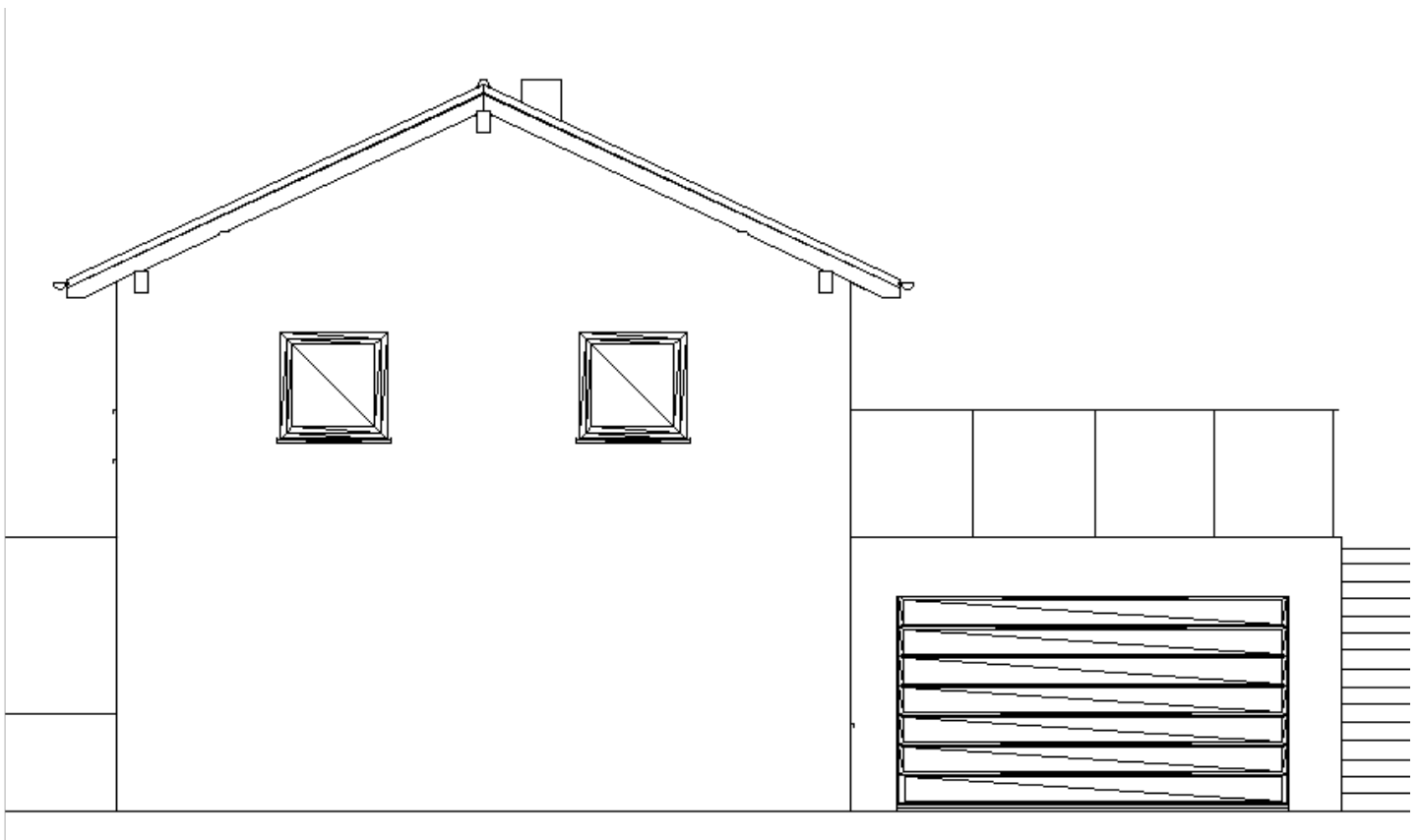


-  tatsächliche Grundstücksgrenze
-  bestehendes Nebengebäude
(soll möglichst erhalten bleiben)
-  Haus
-  Garage
-  Terrasse

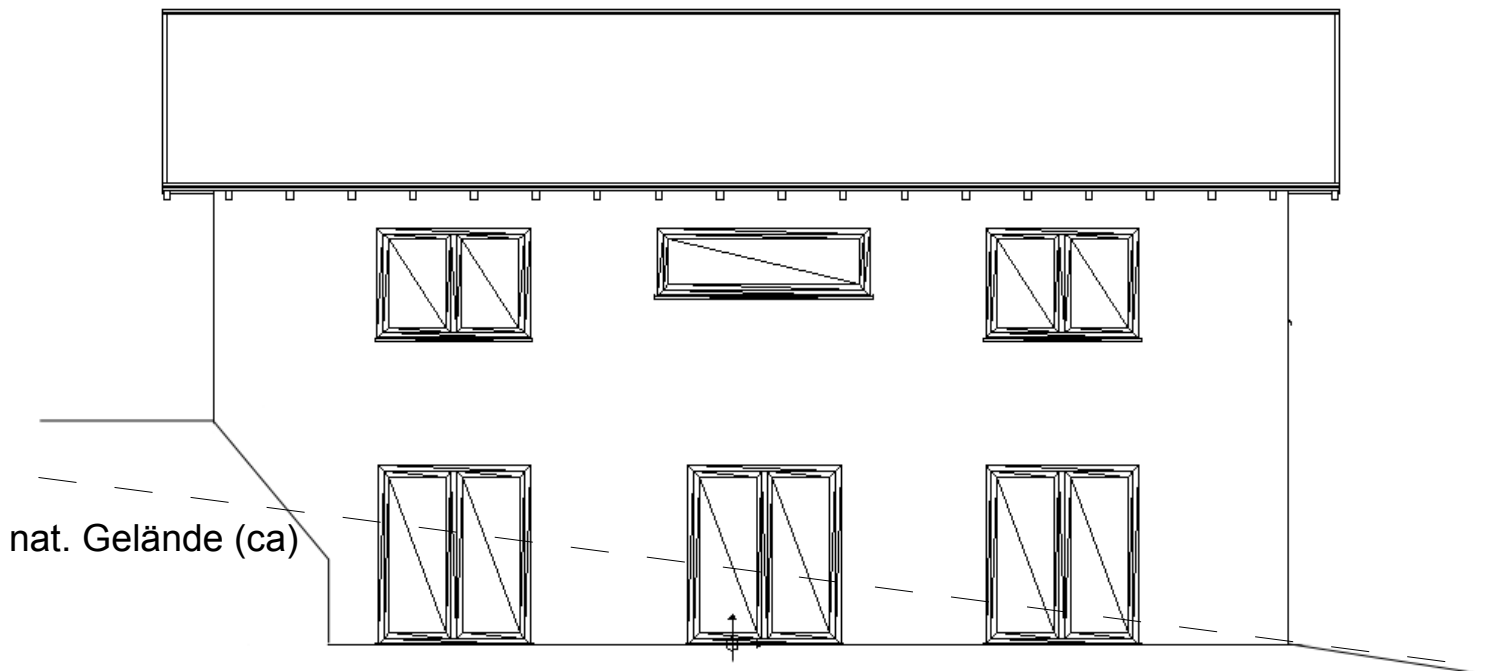
Ansicht Nord



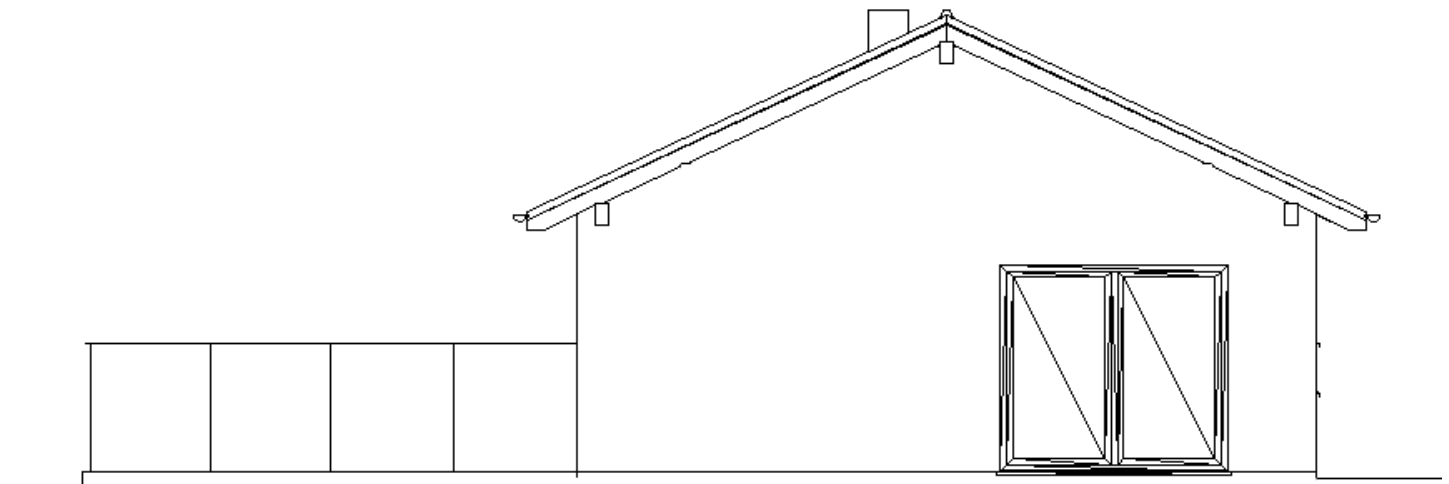
Ansicht Ost (Zufahrt/Straße)



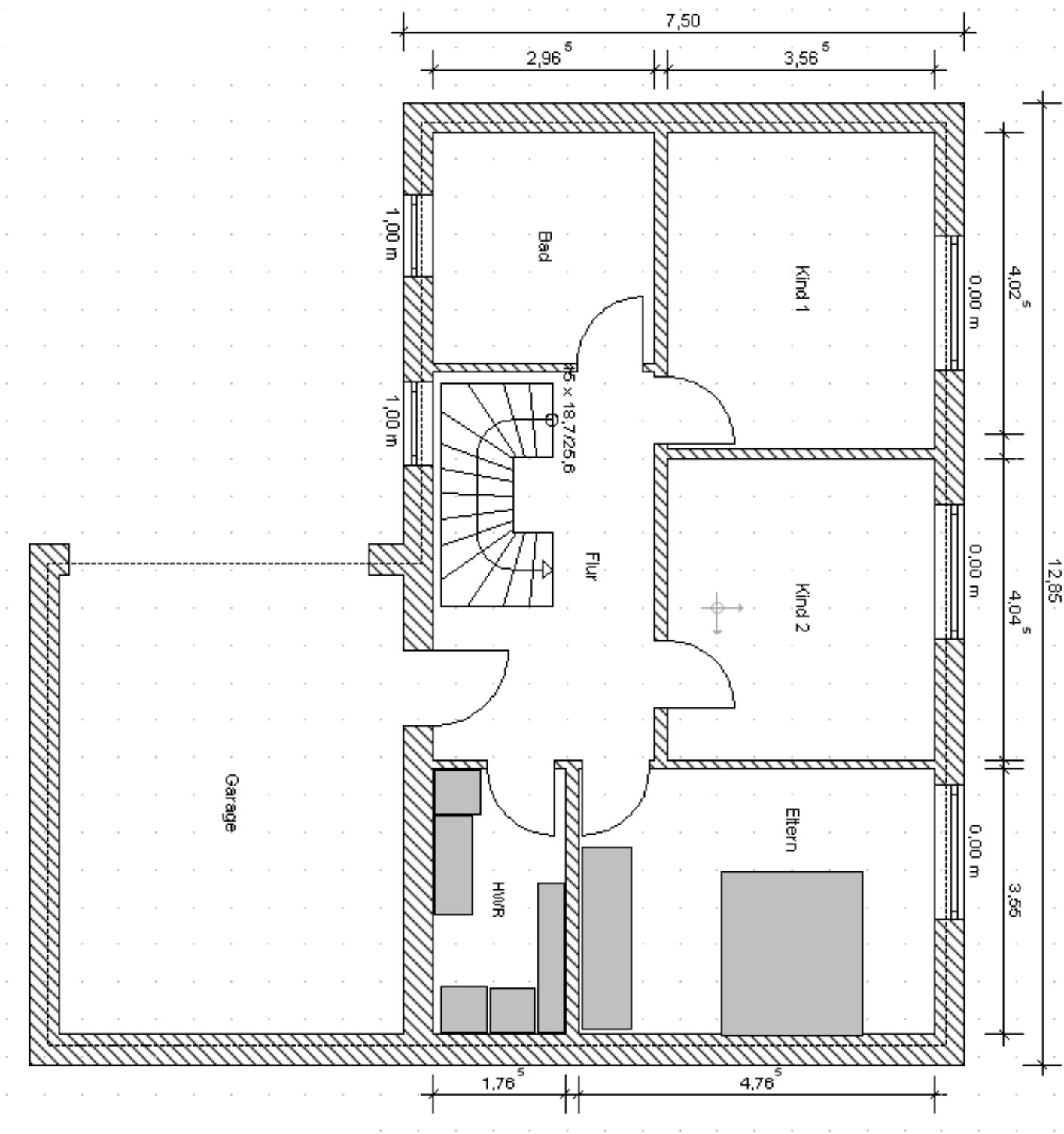
Ansicht Süd



Ansicht West



Grundriss Kellergeschoss



Grundriss Erdgeschoss

